

1410E

DIRECT MOUNT EJECTOR SCRAPER



14yd³ HEAPED
CAPACITY



122" CUTTING
WIDTH

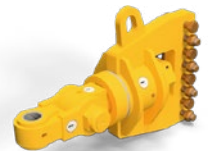


225-620
RECOMMENDED
HORSEPOWER



The 1410E is a rear lift ejector scraper. This design allows the floor of the scraper to remain nearly flat while loading making field drainage and ditch clearing a simple task. The side router blades extend several inches ahead of the blades to keep material within the bowl's cut. The forward placed router blades and flat floor angle are beneficial when loading loose material commonly found while leveling ground for irrigation.

**COMES STANDARD
WITH CAT. 4 AG YOKE
FOR LIGHT USE**



**OPTIONAL SCRAPER
YOKE RECOMMENDED
FOR HEAVY USE**



1410E

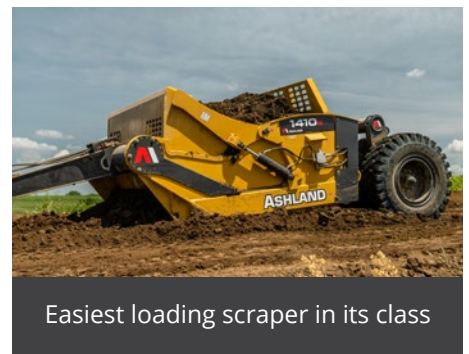


STANDARD FEATURES

- › 17.5 x 25 tires provide uniform compaction with less pumping in most conditions.
- › Pivot pins and cylinders utilize 1,200 hour greaseless composite bushings throughout the scraper. Reducing grease locations by nearly 80%.
- › This is the only ejector scraper we offer that can use your factory category 4 or 5 tractor's drawbar to pull a direct-mount scraper for short-term scraper operations. When using this ag hitch, the drawbar must be slid into the tractor to the shortest position. For long-term operation, we strongly suggest ordering the optional scraper yoke hitch and specialized tractor drawbar.
- › Large steel floor rollers and mid-mounted high-density polyurethane slide blocks, guide the ejector effortlessly with minimal maintenance required.
- › The front section pipe is placed high on the scraper sidewall which provides an unobstructed apron opening to easily eject your material quickly.
- › The stylized curved sidewall allow for greater capacity near the rear of the bowl while lowering the apron slightly for increased visibility into the scraper when loading.
- › Sidewalls are free from bulky framework, providing great trash flow around the machine, shedding debris.
- › The 22" rack can easily be tilted back for top loading. You no longer need to relocate bolts into different positions.
- › The hydraulic plumbing runs through the internal framework of the scraper for protection from the environment or falling debris.
- › Heavy duty multi-piece wheels, valve stem protection, large 10-bolt hubs and high capacity 4.5" spindles. To service, simply remove the 4 bolts from the pillow blocks and the entire axle wheel assembly can be rolled away from the scraper.
- › Convenient grease zerks in hubs
- › Dual plated floor
- › When the ejector cylinder is fully extended, the ejector runs past the blades several inches to unload with ease.
- › Viewing windows are placed on both sides of the apron allowing the operator to see into the bowl when loading.
- › 1 year warranty

SPECIFICATIONS

| | |
|----------------------|--|
| Heaped Capacity | 14 yd ³ (10.7 m ³) |
| Recommended HP | 225-620 hp (168-462 kw) |
| Width of Cut | 122" (309.9 cm) |
| Apron Clearance | 49" (124.5 cm) |
| Depth of Cut | 6" (152 mm) |
| Depth of Spread | 0-17" (0-431 mm) |
| Ground Clearance | 17" (431 mm) |
| Ejector Cylinder (1) | 4.5" x 40" (114 mm x 1,016 mm) |
| Apron Cylinder (2) | 4" x 13" (102 mm x 330 mm) |
| Lift Cylinder (2) | 5" x 16" (127 mm x 406 mm) |
| Laser / GPS Mast | Optional |
| Bushings | Greaseless PTFE Fiber |
| Tires | (4) 17.5 x 25 |
| Overall Width | 134" (340.4 cm) |
| Overall Length | 298" (756.9 cm) |
| Overall Height | 74.25" (188.6 cm) 105.4" (267.7 cm) w/ GPS Mast |
| Weight | 15,300 lb (6,940 kg) |
| Weight Transfer | 25% Tractor 75% Scraper |



Easiest loading scraper in its class

SCAN TO WATCH THE
1410E WALK AROUND

