



# TOUGH & RELIABLE

EJECTOR SCRAPERS / DUMP SCRAPERS / GRADER IMPLEMENTS





**EARTHMOVING  
FOR EVERYONE**





From the tough environment of construction earthmoving to annual field water management - if you have dirt to move, we have a solution for you. With earthmoving scrapers and implements for machines of all sizes and compatible with all the popular power unit brands, you're sure to find a machine that will improve your earthmoving efficiency. If it involves reshaping the earth, tearing it up, or finishing the grade to a perfect level - our earthmoving brands have you covered. With the K.A. Group, there's an earthmoving solution for everyone.





# 2016E

## PRECISION LAND LEVELING EJECTOR SCRAPER

The 2016E is built tough to tackle the brutal workout of daily bulk earthmoving with the right features to complete finish grading. With an extra wide 16ft (4.88m) cutting width and a heaped capacity of 20 cubic yards (15.3 m<sup>3</sup>), this specialized machine is the perfect multifunction solution to complete your earthmoving projects.

### ► SPECIFICATIONS

<b>Heaped Capacity:</b>	20 yd <sup>3</sup> (15.3 m <sup>3</sup> )
<b>Struck Capacity:</b>	14 yd <sup>3</sup> (10.7 m <sup>3</sup> )
<b>Cutting Width:</b>	16' (4.9 m)
<b>Dimensions:</b>	17'4" W x 30'1" L x 10'6" H (5.3 m W x 9.2m L x 3.2 m H)
<b>Weight:</b>	28,000 lb (12,701 kg)
<b>Tires:</b>	23.5 x 25
<b>Required Power:</b>	450+ hp (331+ kW)
<b>Standard GPS Bracket:</b>	Center and Sides

Specifications subject to change without notice  
For complete specs, visit [metalcraftscrapers.com](http://metalcraftscrapers.com)







### EASY LOADING ▲

Designed with a low angle of attack to ensure fast and easy loading

### ADDITIONAL SAFETY ►

Metalcraft scrapers are designed with built in shut off valves on the cylinders as an additional safety during maintenance or repairs.



### REAR LIFT TILT

Create precision slopes with 3D/GPS machine control



### EJECTOR GUIDES ▲

Nylon block ejector guides and simple track design instead of problematic steel rollers.



### HYDRAULICS

Zinc coated flat-face o-ring couplers and all steel cylinder components keep you productive.



# 2814E

## HEAVY DUTY EJECTOR SCRAPER

Made for heavy-duty construction, the rugged structural design of 2814E scraper can handle the most extreme earthmoving conditions over the course of the machine's extensive lifetime. The 2814E is a rear lift controlled scraper which allows the pan to be lowered level with the ground while cutting to easily scoop up loose material. The ejector of the 2814E extends beyond the front edge of the scraper to eliminate carry-back. These loading and unloading features ensure that you maintain efficiency on every cycle.

### ► SPECIFICATIONS

**Heaped Capacity:** 28 yd<sup>3</sup> (21.4 m<sup>3</sup>)

**Struck Capacity:** 20 yd<sup>3</sup> (15.3 m<sup>3</sup>)

**Cutting Width:** 14' (4.3 m)

**Dimensions:** 15'4" W x 32'6" L x 9'10" H  
(4.7 m W x 9.9 m L x 3.0 m H)

**Weight:** 32,500 lb (14,741 kg)

**Tires:** 23.5 x 25

**Required Power:** 450+ hp (331+ kW)

**Shipping:** Optional Containerization

Specifications subject to change without notice  
For complete specs, visit [metalcraftscrapers.com](http://metalcraftscrapers.com)







### COMMON BLADES ▲

Utilizing commonly found blades to ensure availability and affordability

### EASY LOADING ►

Rear-lift design lowers the blade's angle of attack as the scraper is lowered, which makes loading easier.



### ◀ WALKING TANDEM

Transfers loads evenly for a smoother ride and reduced sway



### EJECTOR GUIDES ▲

Nylon block ejector guides and simple track design instead of problematic steel rollers.

### ◀ SAFETY FIRST

Designed with built in shut off valves on cylinders as an additional safety during maintenance or repairs.





# 2212D

## PIVOT DUMP SCRAPER

The 2212D pivot dump scraper is a truly robust machine built to handle your precision land leveling projects. Built with no flexible side sheets, no hinge in the gate and no tubes around the wheels, the 2212D addresses major gripes that earthmovers have expressed about dump style scrapers. Customer feedback is a pillar in our design process and 2212D is a prime example of a machine with features made to exceed our customers expectations.

### ► SPECIFICATIONS

**Heaped Capacity:** 22 yd<sup>3</sup> (16.8 m<sup>3</sup>)

**Struck Capacity:** 13 yd<sup>3</sup> (9.9 m<sup>3</sup>)

**Cutting Width:** 12'6" (3.8 m)

**Dimensions:** 13'11<sup>3</sup>/<sub>4</sub>" W x 29'10" L x 9'7" H  
(4.3 m W x 9.1 m L x 2.9 m H)

**Weight:** 27,000 lb (12,247 kg)

**Tires:** 23.5 x 25 standard  
26.5 x 25 optional

**Required Power:** 450+ hp (331+ kW)

**GPS Bracket:** Optional

Specifications subject to change without notice  
For complete specs, visit [metalcraftscrapers.com](http://metalcraftscrapers.com)







### EXTRA FLOTATION ▲

Optional 26.5 x 25 tires provide excellent flotation in wet conditions



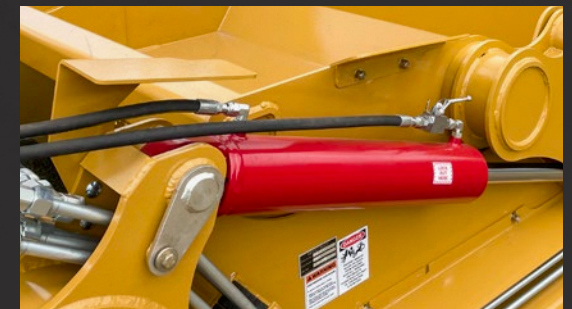
### ▲ LARGE THROAT OPENING

A spacious 71" (180 cm) throat opening allows material to unload with ease



### BOLT ON REAR HITCH ▲

Increase single power unit capacity by pulling various scrapers in tandem



### SAFETY LOCKOUT ▲

Designed with built in shut off valves on cylinders as an additional safety during maintenance or repairs.



# 2614D

## PIVOT DUMP SCRAPER

Metalcraft's 26 cubic yard (19.9 cubic meter) pivot dump scraper is the largest of its kind on the market. With this additional capacity, operators can expect increased productivity by moving more dirt with each cycle than the competition. Featuring a 70" gate opening, no hinge gate, no flexible side sheets, a wheel carriage design that sheds material, a bolt-on rear hitch that accepts all hitch types, and top quality cylinders; the 2614D is Manufactured to handle the toughest job site conditions.

### ► SPECIFICATIONS

**Heaped Capacity:** 26 yd<sup>3</sup> (19.9 m<sup>3</sup>)

**Struck Capacity:** 16 yd<sup>3</sup> (12.2 m<sup>3</sup>)

**Cutting Width:** 14ft (4.3 m)

**Dimensions:** 15'6" W x 29'10" L x 9'7" H  
(4.7 m W x 9.1 m L x 2.9 m H)

**Weight:** 33,180 lb (15,050 kg)

**Tires:** 26.5 x 25 standard

**Required Power:** 450+ hp (331+ kW)

**Shipping:** Optional Containerization

Specifications subject to change without notice  
For complete specs, visit [metalcraftscrapers.com](http://metalcraftscrapers.com)





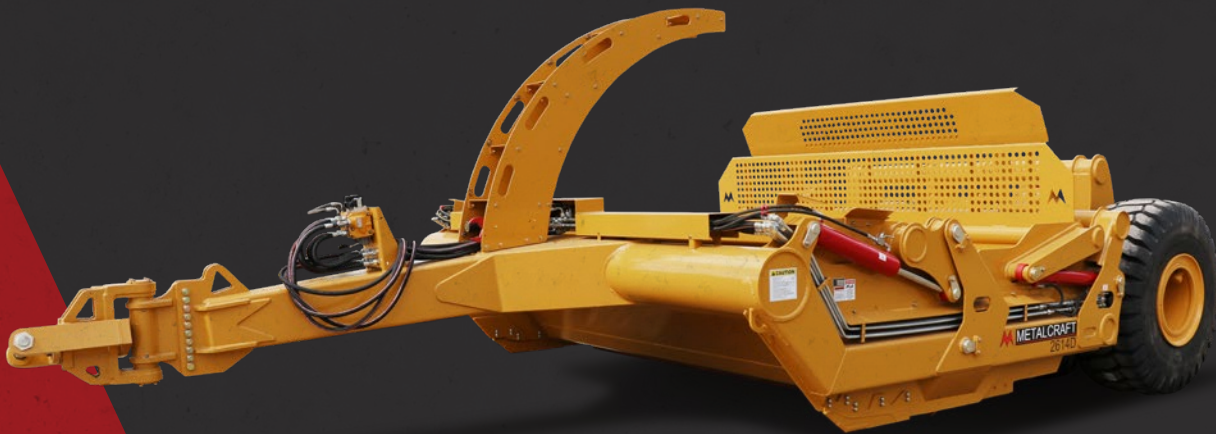


### EXTENDED RACK ▲

Added rack height prevents spillage and protects rear hydraulics from debris

### BOLT ON REAR HITCH ►

Increase single power unit capacity by pulling various scrapers in tandem



### LARGE THROAT OPENING

A spacious 70" (178 cm) throat opening allows material to unload with ease



### ROBUST HYDRAULICS ▲

Zinc coated flat-face o-ring couplers and all steel cylinder components keep you productive.









**INCREASE  
PRODUCTIVITY  
WITH SMOOTH  
HAUL ROADS**



# RG12/RG14

## ROAD GRADER IMPLEMENT

Replace your inefficient and expensive motor graders with this simple implement to increase haul road speeds and reduce wear on your haulage equipment. The Metalcraft RG implement is available in 12' (3.68 m) and 14' (4.27 m) widths. Make quick work of finishing tasks with the RG's multi-blade design. Smooth your cut zone with your RG to reduce duck walking and bouncing while scraping - increasing your loading efficiency.

### ► SPECIFICATIONS

	<b>RG12</b>	<b>RG14</b>
<b>Cutting Width:</b>	12'5" (3.8 m)	14' (4.3 m)
<b>Dimensions:</b>	12'5" W x 28'9" L x 4'6" H (3.8 m W x 8.8 m L x 1.4 m H)	14' W x 28'9" L x 4'6" H (4.7 m W x 8.8 m L x 1.4 m H)
<b>Weight:</b>	11,500 lb (5,216 kg)	12,500 lb (5,670 kg)
<b>Required Power:</b>	150+ hp (112+ kW)	150+ hp (112+ kW)
<b>Rear Hitch:</b>	Standard	Standard
<b>Rippers:</b>	Optional	Optional

Specifications subject to change without notice  
For complete specs, visit [metalcraftscrapers.com](http://metalcraftscrapers.com)







◀ **WALKING TANDEM**

Reduce bouncing and “duck walking” with walking tandem wheels

**DIRECTIONAL TILT** ▲

Adjustable tilt for sloped road beds and drainage ways

**SMOOTH FINISH** ▶

Aggressive angled front grader blades loosen dirt while the rear blade creates a smooth finish



**OPTIONAL RIPPERS** ▲

Use optional rippers to make scraper loading more efficient







+1 478 625 1225 Phone  
+1 478 625 1235 Fax

**ADDRESS**

4620 Horseshoe Road  
Louisville, GA  
30434

**EMAIL**

sales@kagroup.com

**METALCRAFTSCRAPERS.COM**



YOUR LOCAL DEALER:



Metalcraft is an earthmoving  
equipment brand of  
the K.A. Group

