

# 1812E

**DIRECT MOUNT EJECTOR SCRAPER**



**18yd<sup>3</sup>** HEAPED  
CAPACITY



**144"** CUTTING  
WIDTH



**300-580**  
RECOMMENDED  
HORSEPOWER



Designed using the same guiding principles as its big brothers - the Ashland high capacity construction scraper line - the 1812E packs all the same impressive performance into a smaller package, making it an ideal earthmoving solution for mid-high horsepower tractors. The 1812E has the perfect combination of width, capacity, weight transfer ratio, and ground engaging geometry to suite the needs of farmers and construction contractors doing smaller earthmoving projects.

**INTRODUCING THE  
NEXT GENERATION  
OF EARTHMOVERS  
FOR AGRICULTURE  
AND SMALL SCALE  
CONSTRUCTION**

# 1812E

## POSITIONABLE WHEELS

The rear frame allows the four independent wheel assemblies to be installed in various positions. The most common is offset, which reduces mud build-up and prevents material from pushing ahead of the tire in soft conditions.

## OPTIONAL TANDEM SETUP

The 1812E can also be ordered as a lead unit which allows you to pull two pans in tandem and increase your combined heaped capacity to 36 cubic yards.

## AUTOMATIC CUSHION RIDE

An accumulator is installed in the hydraulic system in order to turn the vertical lift cylinders into shock absorbers. This proven design is used to reduce wear and protect both your scraper and tractor investment.



## MINIMAL MAINTENANCE

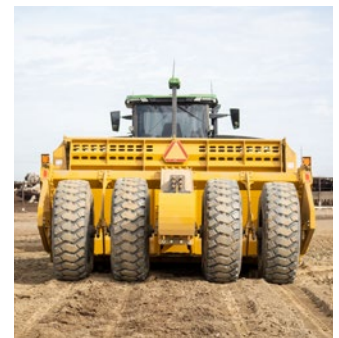
The front hitch is the only daily maintenance point on the 1812E. This scraper uses high-quality greaseless fiber bushings on pivot pins, hydraulic cylinders, and ejector wall rollers. The rear ejector frame uses high-density plastic slide blocks to guide the ejector wall forward smoothly.

## CONTAINERIZED SHIPPING

The bolt together design of the 1812E easily allows the entire machine to be disassembled and loaded into a 40ft shipping container for cost effective international shipping.

## SPECIFICATIONS

General Specifications	Standard	Metric
Heaped Capacity (ISO)	18.1 Cubic Yards	13.8 Cubic Meters
Struck Capacity	10.8 Cubic Yards	8.3 Cubic Meters
Recommended Power Unit	300+ HP	221+ kw
Width of Cut	143.5"	365 cm
Gate Opening	57.75"	146.7 cm
Depth of Spread	0 - 23.70"	0 - 60.2 cm
Ground Clearance at Blade	23.70"	60.2 cm
Ejector Cylinder (1)	5" x 67"	12.7 cm x 170.2 cm
Gate Cylinder (2)	4.5" x 29.3"	11.4 cm x 74.5 cm
Lift Cylinder (2)	5.5" x 35.4"	14 cm x 89.9 cm
Tires Standard Rear (4)	20.5 R25 Bias	20.5 R25 Bias
Weight Transfer	25.6% Tractor - 74.4% Scraper	25.6% Tractor - 74.4% Scraper
Tandem Configuration	Optional	Optional
Lighting System	Standard	Standard
Laser/GPS Mount	Standard	Standard
Laser/GPS Mount Extension	Optional	Optional
Push Bumper	Standard	Standard
Transport Dimensions	Standard	Metric
Overall Width	160.4"	407.4 cm
Overall Length	379.4"	963.7 cm
Overall Height	93.01"	236.2 cm
Weight	21,120 lb	9,580 kg



TOLL FREE: +1 877 634 4622  
www.ashlandind.com

# DO MORE