

# HD50V5



## DIGGING DEPTH

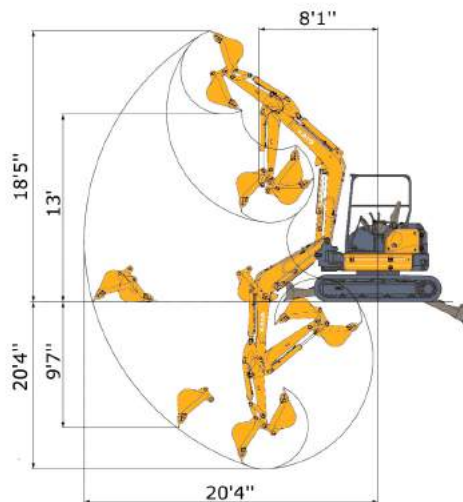
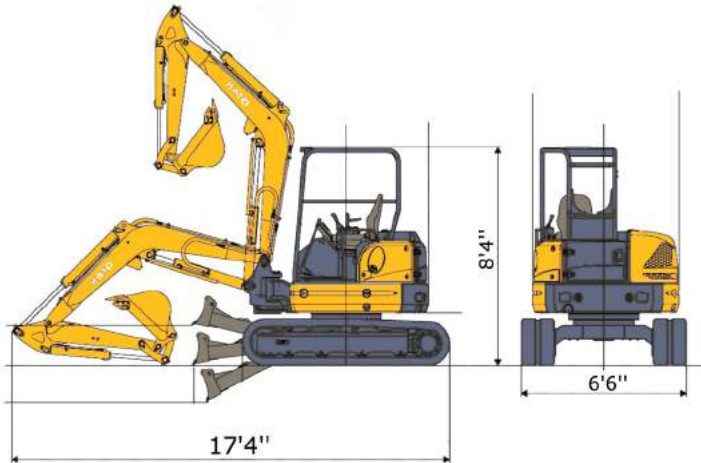
12'7"

## OUTPUT RATING

43.5HP

## OPERATIONG WEIGHT

10,830 LBS



### 50V5

Working Ranges

A.	Max digging radius	20'4"
B.	Max digging depth	12'4"
C.	Max vertical dig depth	9'7"
D.	Max dumping height	13'
E.	Max digging height	18'5"
F.	Min. front-turn radius	8'1"
G.	At right boom swing	7'

# KATO

**HD**  
**HD50V5**

<b>MODEL</b>	<b>HD50V5</b>
<b>PERFORMANCE</b>	
Bucket Capacity	5 ft <sup>3</sup>
Bucket Width	24"
Operating Weight	10,830 lbs
Transport Weight	10,251 lbs
Swing Speed	9.3 rpm
Travel Speed (Low/ High)	1.8 / 2.9 mph
Gradeability	30°
Ground Pressure	3.9 psi
Bucket Digging Force	9,100 lbs.
<b>Engine</b>	
Model	Kubota V2403-CR-E5B
Output Rating	43.5 hp @ 2,400 rpm
Fuel Tank Capacity	17.4 gal
<b>Boom Swing System</b>	
Type	Offset Boom w/ Hydraulic Cyl.
Swing Angle (L / R)	50° / 80°
<b>HYDRAULIC SYSTEM</b>	
Total Hydraulic System Flow	43 gpm
Max Auxiliary Hydraulic Flow	16 gpm
<b>Dozer Blade</b>	
Size	6'6" x 1'3"
Lift Above / Drop Below Ground	1'6" / 1'5"

**5**

**KATO**  
EXCAVATORS AND TRACK LOADERS

**www.KATOCES.com**  
400 Production Court  
Elizabethtown, KY 42701  
(800) 538-1447 | Fax: (270) 737-0419