

# HD55N4



## DIGGING DEPTH

12'8"

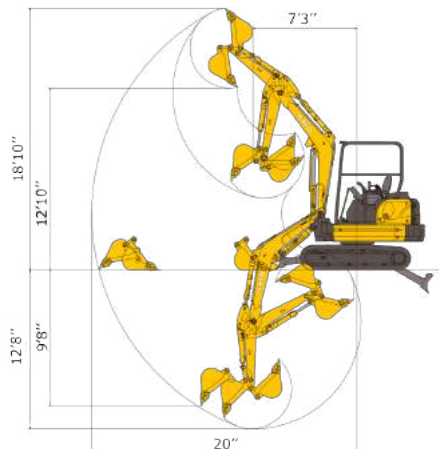
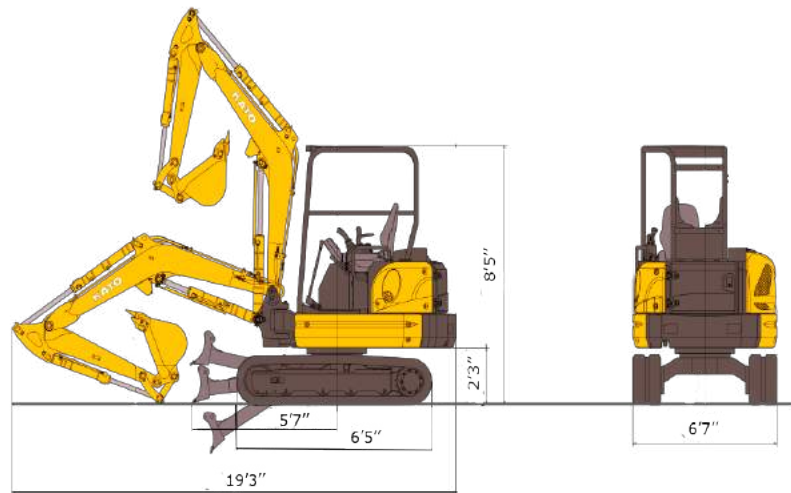
## OUTPUT RATING

63.8HP

## OPERATING WEIGHT

12,733 LBS

# KATO



### HD55N4

### Working Ranges

A.	Max. digging radius	20'
B.	Max. digging depth	12'8"
C.	Max. digging height	18'10"
D.	Max. dumping height	12'10"
E.	Max. vertical digging depth	9'8"
F.	Min. front turning radius	7'3"
G.	At Right Boom Swing	5'10"

**HD!**  
**HD55N4**

<b>MODEL</b>	<b>HD55N4</b>
<b>Performance</b>	
Bucket Capacity	5 ft <sup>3</sup>
Bucket Width	24"
Operating Weight	12,733 lbs
Transportation Weight	11,795 lbs
Maximum Swing Speed	9 rpm
Travel Speed (low/high)	1.6/2.8 mph
Gradeability	30°
Ground Pressure	4.79 psi
Max Bucket Digging Force	11,071 lbs
<b>Engine</b>	
Model	YANMAR-4TNV98C
Rated Output	63.8 hp
Fuel Tank Capacity	25.1 gal
<b>Boom Swing System</b>	
Type	Boom Offset with Hydraulic Cylinder
Swing Angle (L / R)	50° / 90°
<b>Hydraulic System</b>	
Total Hydraulic system Flow	46 gpm
Max Auxiliary Hyd. Flow	29.2 gpm
<b>Dozer Blade</b>	
Size	14.5" / 6'7"
Lift Above ground / Drop Below Ground	14" / 16.5"

**KATO**

**EXCAVATORS AND TRACK LOADERS**

**www.KATOCES.com**

**400 Production Court**

**Elizabethtown, KY 42701**

**(800) 538-1447 | Fax: (270) 737-0419**